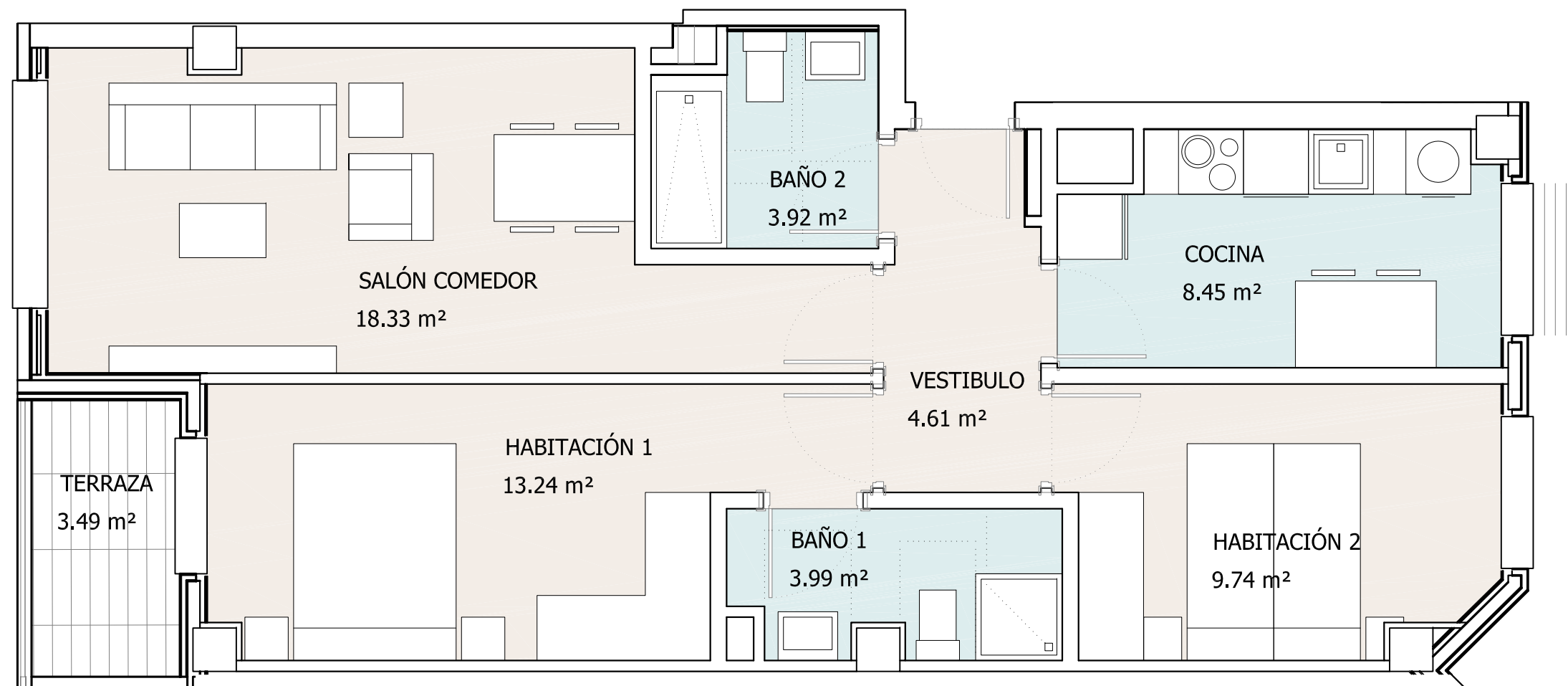
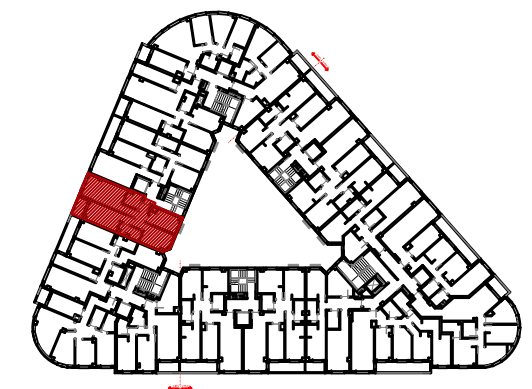
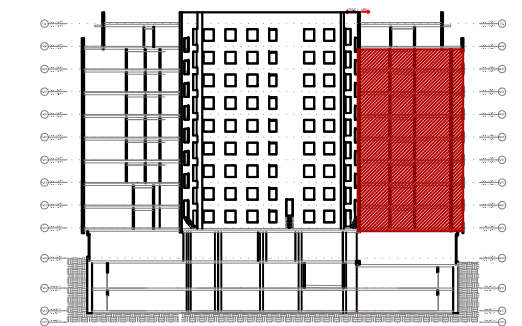


# VIVIENDAS EN LA PARCELA 1

AREA POLIDEPORTIVO - TARTANGA ERANDIO



## PORTAL 2 - MANO A PLANTA de 1º a 8º

Superficie útil cerrada.....	62.28 m <sup>2</sup>
Superficie útil terraza.....	3.49 m <sup>2</sup>
Superficie útil total computable.....	64.03 m <sup>2</sup>

FEBRERO 2022



Promueve

Gestiona

